



The ABC Form is the standardised Format of the International Embryo Transfer Society.

ABC FLUSH FORM

A. CERTIFICATE OF EMBRYO RECOVERY

PRESCRIBED Lodging Fee per flush to accompany Certificate A.

Donor Cow Name, Herdbook No., DNA Case No., Donor Cow Owner, Address, HFAA Member No., Tel. No., Onset Oestrus Date, Service Sire (1), Herdbook No., Breeding Date, ID Code, Freeze Date or Batch No., Sexed Semen X or Y, Recovery Date, Service Sire (2), Herdbook No., Total Recovered, No. Cleaved/Degen., No. Unfertilised, No. Transferred, No. Frozen, ET Code, Lodging Fee \$, Are the embryos IVF?, Signature, Date

B. CERTIFICATE OF EMBRYO TRANSFER

Record ALL fresh transfers (downwards) and freezing details (upwards) on date of embryo recovery. Lodge BREED COPY (original) as soon as possible, but within 6 months of flushing in the case of fresh embryos. Delete non-pregnancies before lodgement.

EMBRYO IDENTIFICATION: RECIPIENT

One embryo was transferred to each of the following recipients:

Table with columns: Recip. Tatt or Ear Tag No., Recipient Registration No., Breed, Days Since Oestrus, Stage Code, Qual. Code, Embryo Manipulated (N, D, F, M or U), Thawed Straw No., Thawed Transfer Date, Pregnancy Confirmed, Comments. Rows 1-15.

Table with columns: Frozen Embryo Cane No., Frozen Straw Id No., No. Embs./Straw, No. X Washed, Stage Code, Quality Code, Embryo Manipulated (N, D, F, M or U), Zona Intact, Trypsin Treated, Comments

EMBRYO IDENTIFICATION: FROZEN EMBRYO (complete upwards as part of Certificate of Freezing)

Type of container Straw Ampule Other Each container labelled to show firm code, breed, reg.no. of donor, freeze. Str. or Amp.no.

Signature, Date, Phone, Practitioner that transferred/froze the embryos, ET Code

\*Use comments column for any special notations and/or to identify the location of the opposite half of a divided embryo. Pregnancy can be noted.

C. CERTIFICATE OF FREEZING

Time from recovery to onset of freezing (hrs.) Cryoprotectant and concentration, final molality and cooling procedure

How Frozen: Seed Temp. Cooling Rate Plunge Temp. Other

Recommended method of thawing and dilution

N.B. Conditions for lodging Embryo Certificates appear on page2. Please complete this form and forward the original to Holstein Australia, PO Box 489, Hawthorn BC, 3122, within 6 months, together with applicable fees. Take two copies, one for the PRACTITIONER and one for the OWNER to keep. Complete DBC form in the event of a change of ownership in a transferred or frozen embryo. DBC forms are available on request from Holstein Australia and on this website.

The Embryo Transfer documents A, B, C and D have been adopted by The Holstein-Friesian Association of Australia Inc. on the recommendation of the International Embryo Transfer Society in the interests of global standardisation of recording procedures.

Parentage verification of ET calves will be applied according to bylaw provisions, and the DNA profile or other genetic imprint of both donors should be recorded no later than the date of first flushing.

Stringent documentation and monitoring of embryo movement is a requirement for registration in the HFAA Herdbook, and the relevant ET forms must be completed and lodged, together with the prescribed fee, whenever embryos are:

Recovered;	A – Certificate of Embryo Recovery	} - To be Lodged within 6 months
or Implanted;	B – Certificate of Embryo Transfer	
or Frozen;	C – Certificate of Freezing	
or Sold/Exported;	D – Application for Embryo Export/ Change of Ownership	

Combined Certificates “ABC” and “DBC” are available on request, together with the relevant prescribed fees from:

**Holstein Australia, PO Box 489, Hawthorn BC, Vic. 3122**  
Tel: (03) 0835 7600 Fax: (03) 9835 7699

**Explanation of Codes on Front of the Form:**

Use the following Codes to describe the embryo, and identify the month in all dates.

(Note: The Stage Code is the State of development of the embryo.

The Quality Code is the Quality of the Embryos)

**STAGE CODE**

- |            |   |
|------------|---|
| <b>No.</b> | <b>Stage</b>                            |
| 1.         | Unfertilised                            |
| 2.         | 2- to 12-cell (day 2-5)                 |
| 3.         | Early Morula (day 5-6)                  |
| 4.         | Morula (day 6)                          |
| 5.         | Early Blastocyst (day 7)                |
| 6.         | Blastocyst (day 7-8)                    |
| 7.         | Expanded Blastocyst (day 8-9)           |
| 8.         | Hatched Blastocyst (day 9)              |
| 9.         | Expanding Hatched Blastocyst (day 9-10) |

**QUALITY CODE**

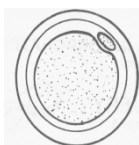
- Code 1. Excellent or Good  
Code 2. Fair  
Code 3. Poor  
Code 4. Dead or degenerating  
(Refer to IETS Manual, Third Edition, Chapter 9, for Description of codes)

**MANIPULATION OF EMBRYOS**

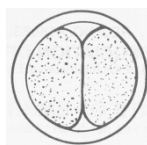
- N Not manipulated  
D Divided  
F Female by Biopsy  
M Male by Biopsy  
U Sex Undetermined by Biopsy  
  
(Use comment column to describe other biopsies)

**SEXED SEMEN**

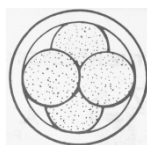
- X Female Y Male



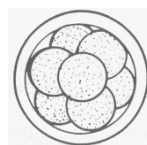
Code 1.  
1-cell (day 1)



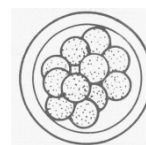
Code 2.  
2-cell (day 2)



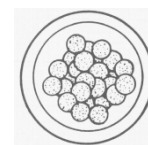
Code 2.  
4-cell (day 3)



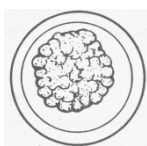
Code 2.  
8-cell (day 4)



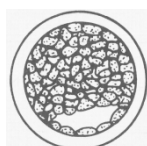
Code 2.  
16-cell (day 5)



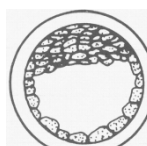
Code 3.  
Early Morula  
(day 5-6)



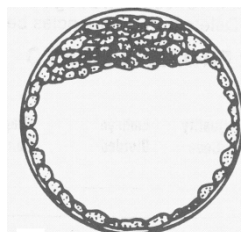
Code 4.  
Morula  
(day 6)



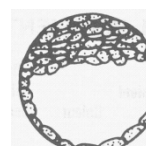
Code 5.  
Early Blastocyst  
(day 7)



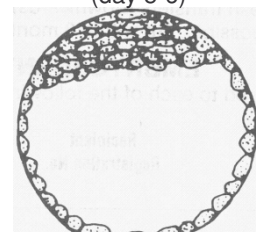
Code 6.  
Blastocyst  
(day 7-8)



Code 7.  
Expanded Blastocyst  
(day 8-9)



Code 8.  
Hatched Blastocyst  
(day 9)



Code 9. Expanding  
hatched Blastocyst  
(day 9-10)