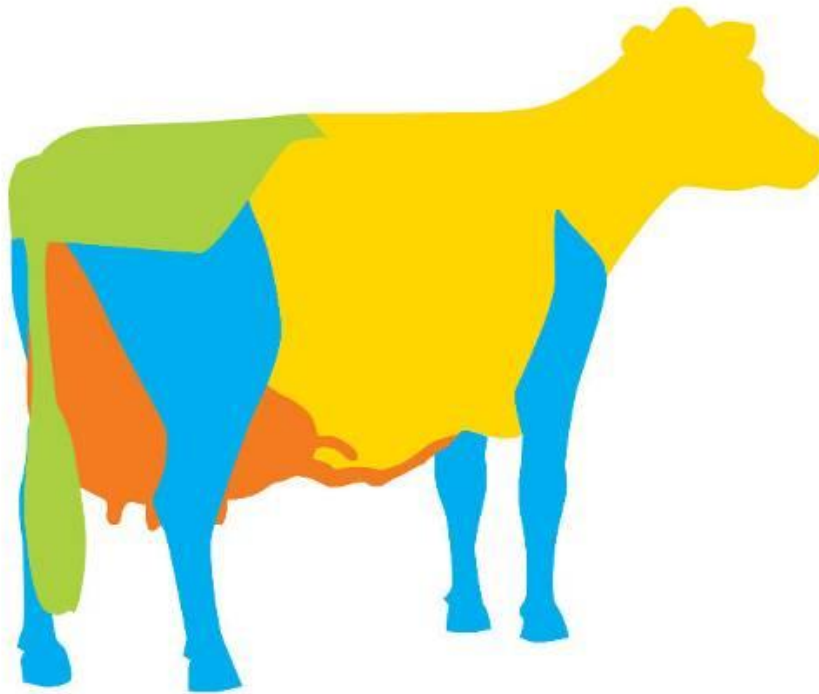






AUSTRALIA'S MULTI-BREED CLASSIFICATION SYSTEM

Simplified Scorecard



-  Rump
-  Mammary System
-  Feet & Legs
-  Dairy Strength

Calculated Scores

- Weightings and Ideals set by individual breeds
- Final and Composite Scores calculated based on linears, ideals and weightings.

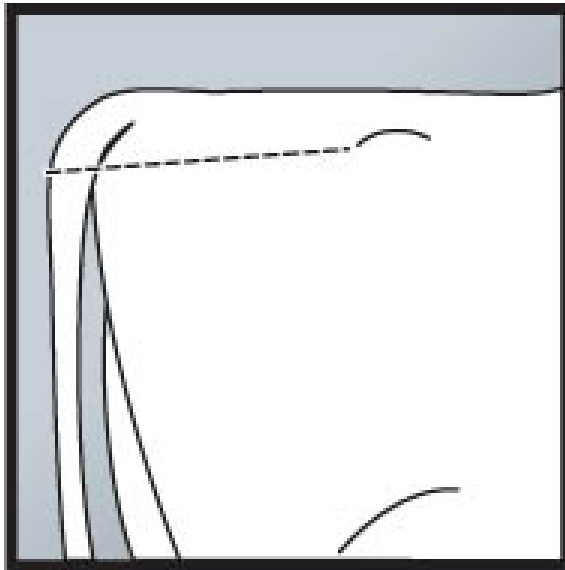
Rump

Contributes 10%

Rump Traits

Rump Angle - 42%

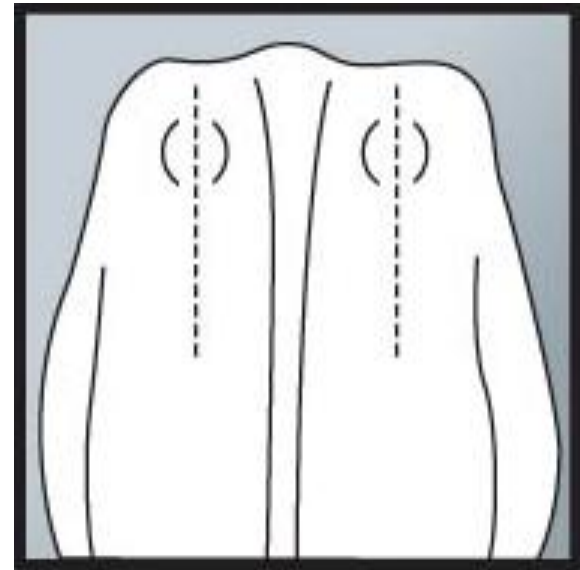
Linear score 5-6 = Ideal
Measured



5-6. IDEAL

Pin Width - 26%

Linear score 9 = Ideal
Measured

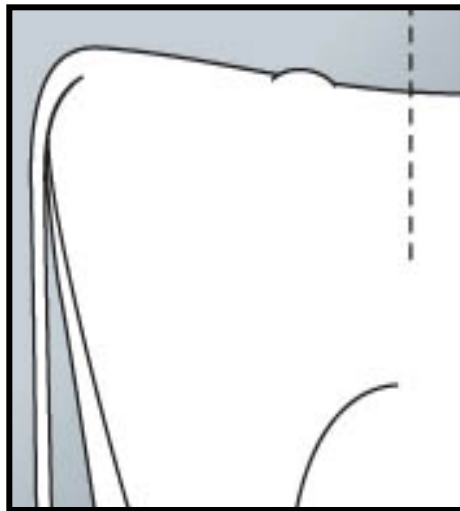


9. WIDE

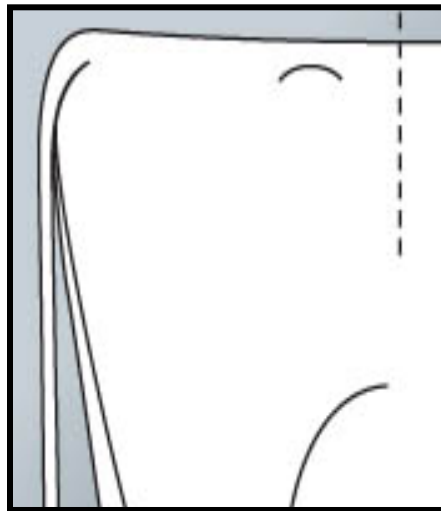
Rump Traits

Loin Strength 32 %

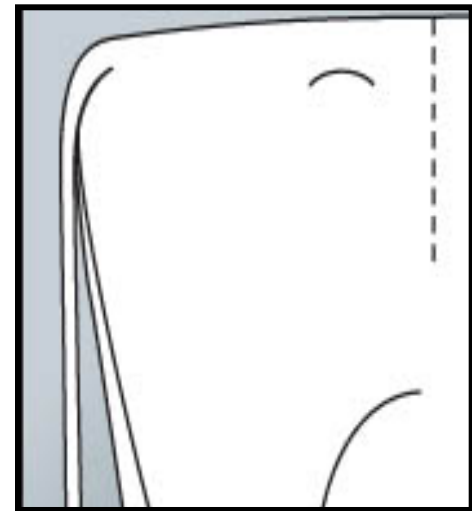
Linear score 9 = Ideal



1. WEAK



5. INTERMEDIATE



9. STRONG

Mammary System

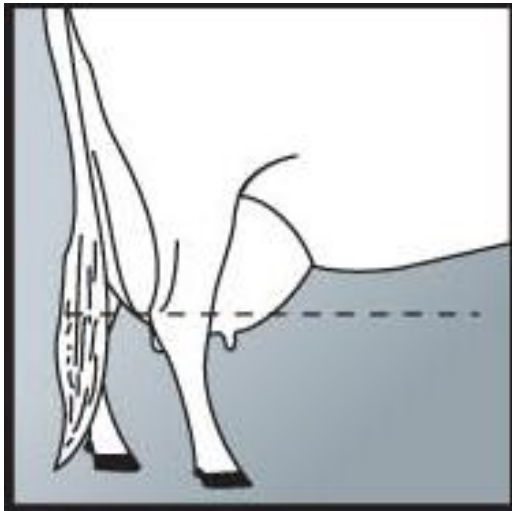
Contributes 40%

Mammary Traits

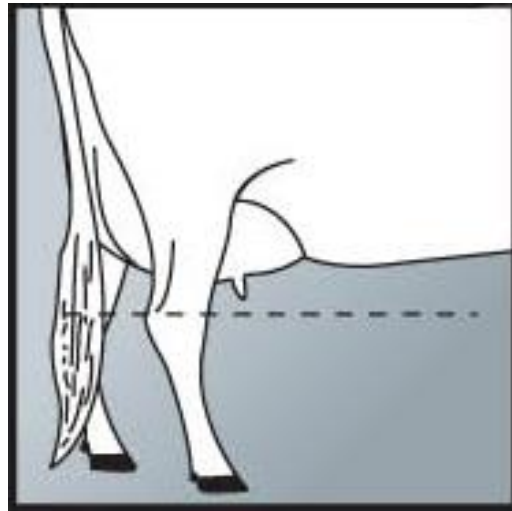
Udder Depth - 14%

Linear score 5-6 = Ideal

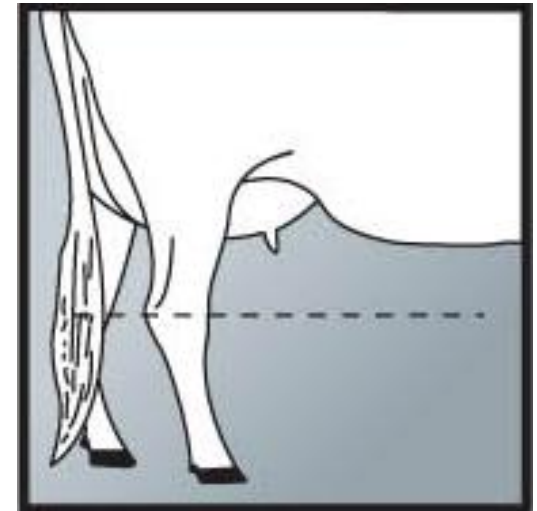
Measured



1. DEEP



5. INTERMEDIATE



9. SHALLOW

Mammary Traits

Udder Texture - 16%

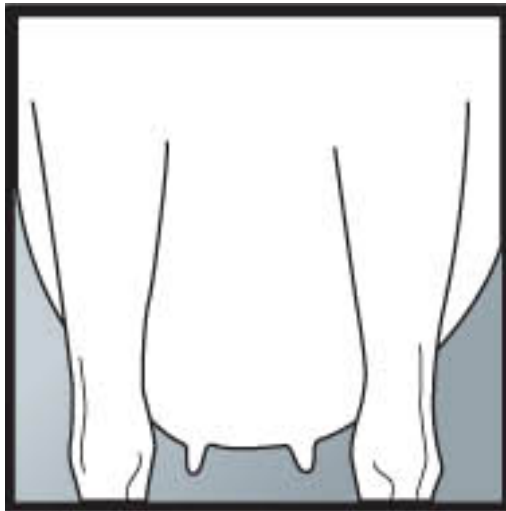
Linear score 9 = Ideal



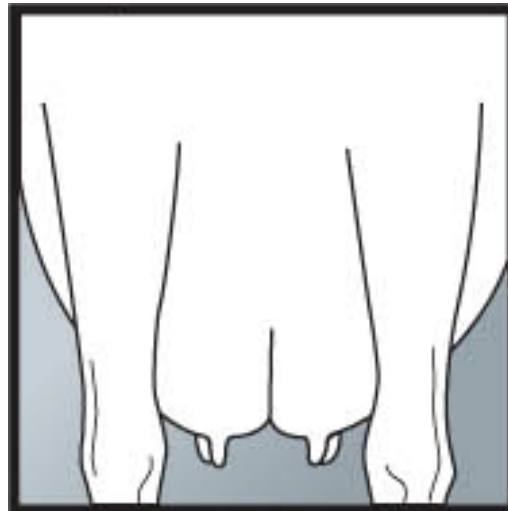
Mammary Traits

Median Suspensory - 14%

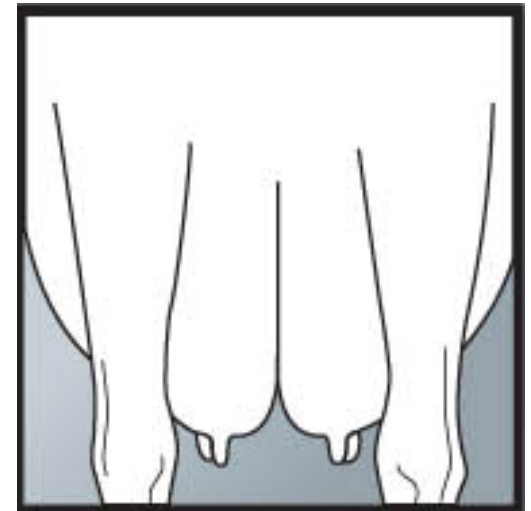
Linear score 9 = Ideal



1. WEAK



5. INTERMEDIATE

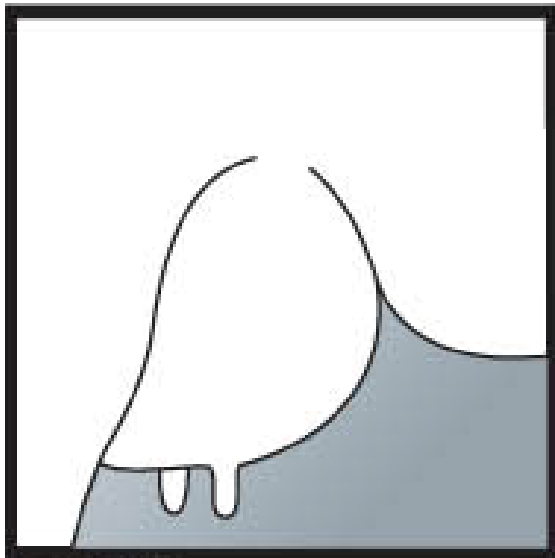


9. STRONG

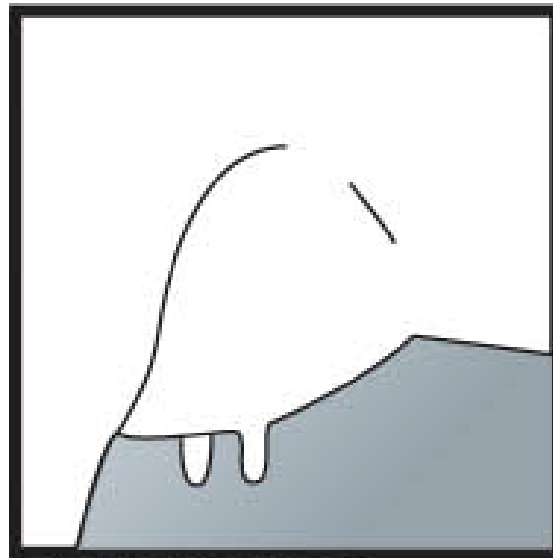
Mammary Traits

Fore Attachment - 16%

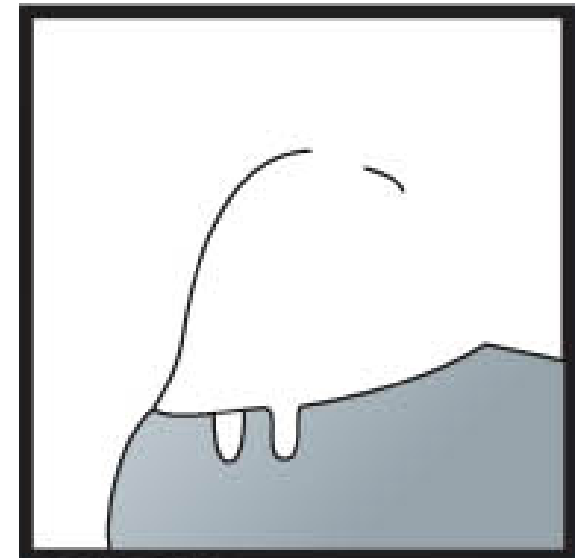
Linear score 9 = Ideal



1. WEAK



5. INTERMEDIATE

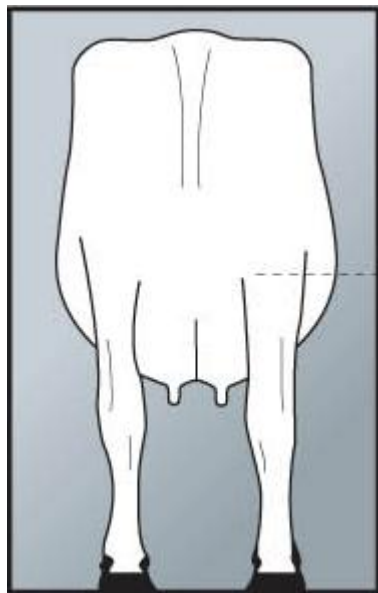


9. STRONG

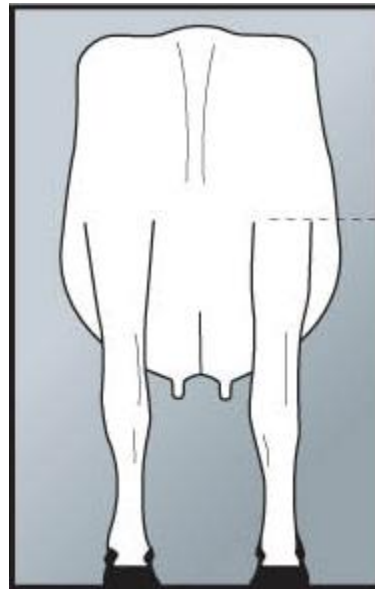
Mammary Traits

Rear Attachment Height – 13%

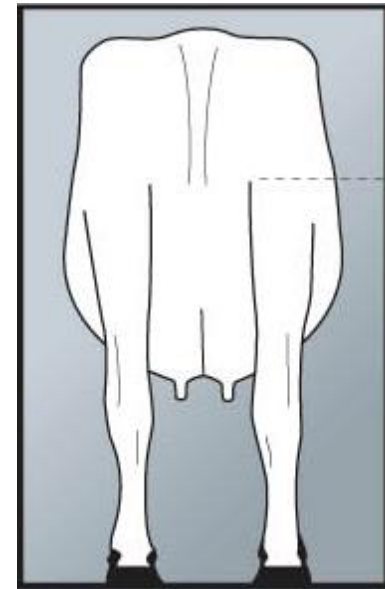
Linear score 9 = ideal
Measured



1. LOW



5. INTERMEDIATE



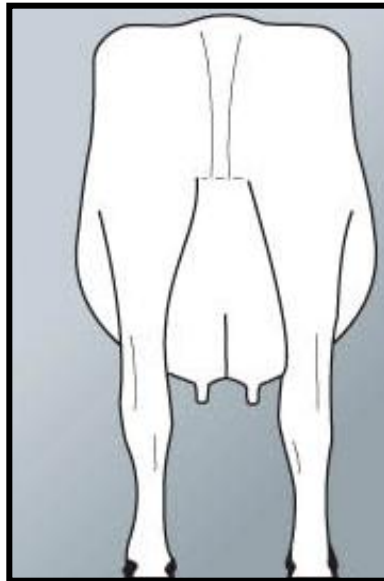
9. HIGH

Mammary Traits

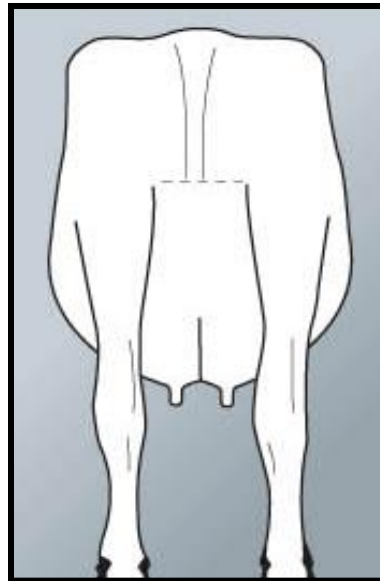
Rear Attachment Width – 11%

Linear score 9 = ideal

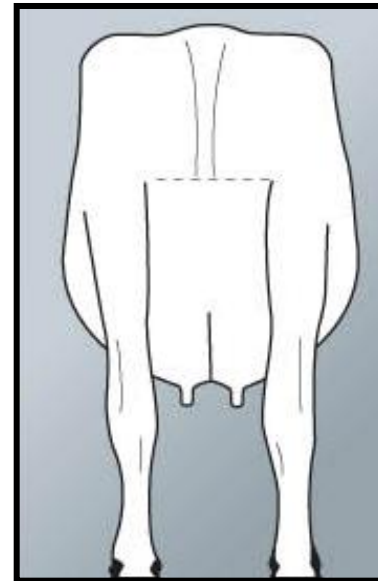
Measured



1. NARROW



5. INTERMEDIATE



9. WIDE

Mammary Traits

Rear Teat Placement - 6%

Linear score 5-6 = Centre of Quarter

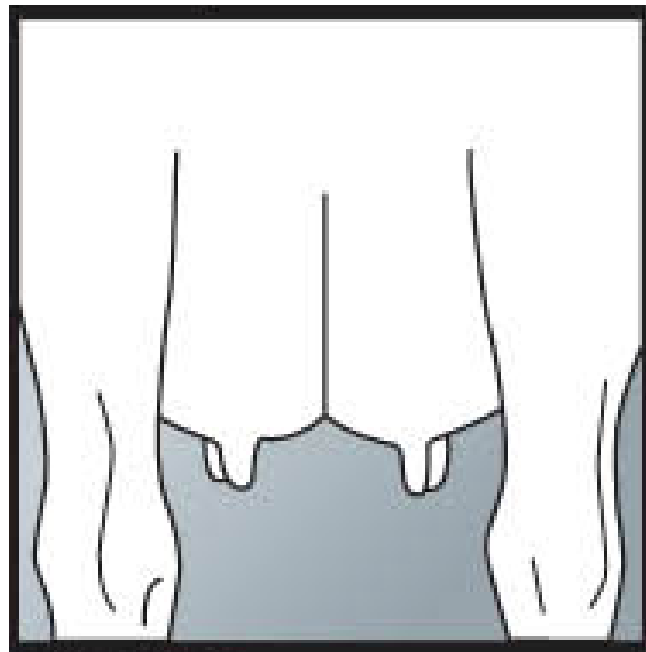
Front Teat Placement – 8%

Linear score 5 = Centre of Quarter

Teat Length - 2%

Linear score 5 = Ideal

Measured



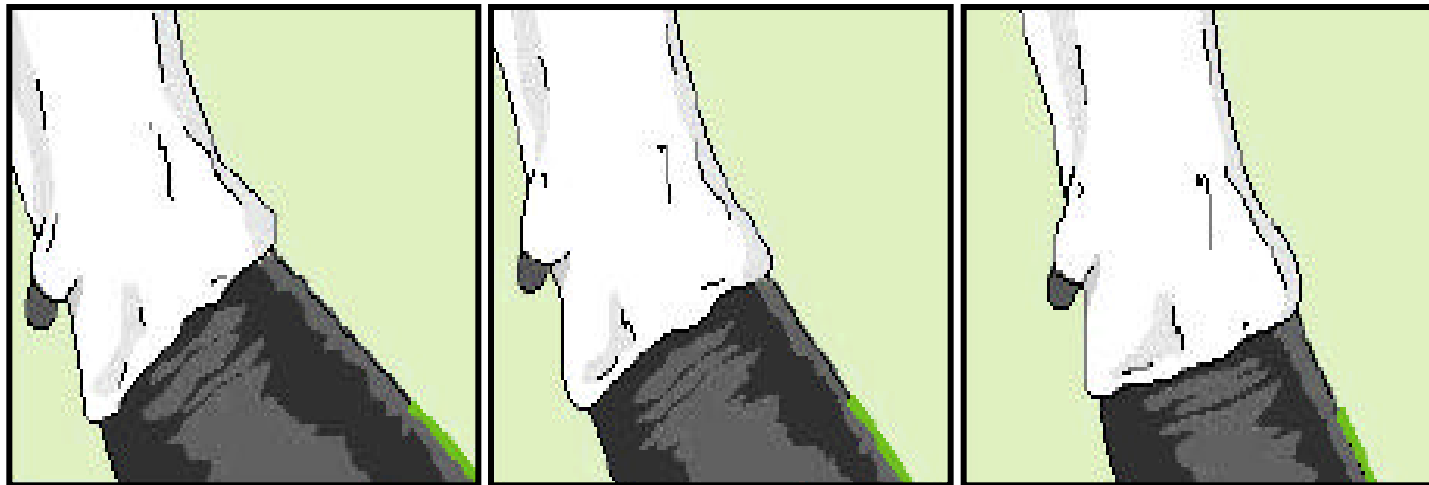
Feet and Legs

Contributes 25%

Feet & Leg Traits

Foot Angle – 25%

Linear score 7 = Ideal



1. LOW

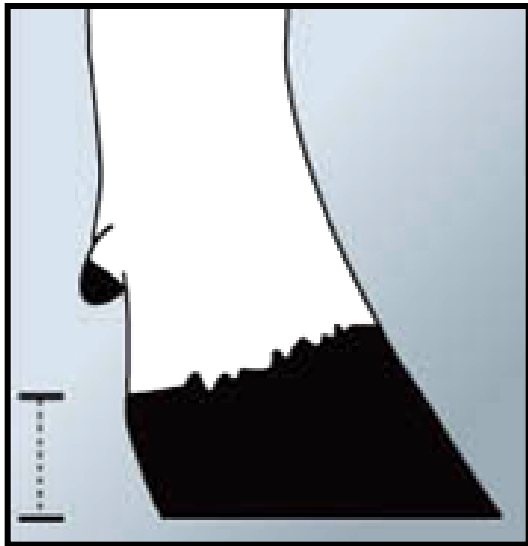
5. INTERMEDIATE

9. STEEP

Feet & Leg Traits

Heel Depth – 12%

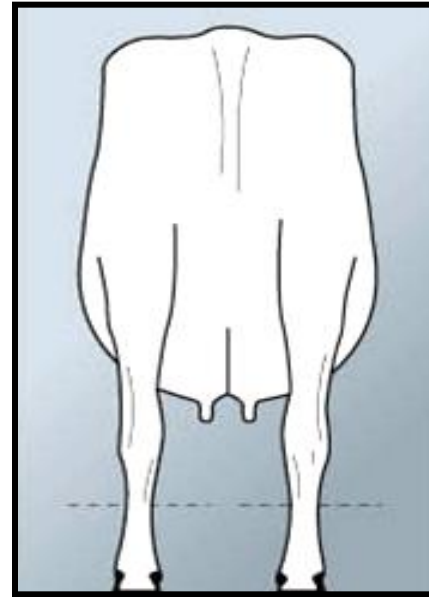
Linear score 7-9 = Ideal



9. STEEP

Bone Quality – 13%

Linear score 9 = Ideal

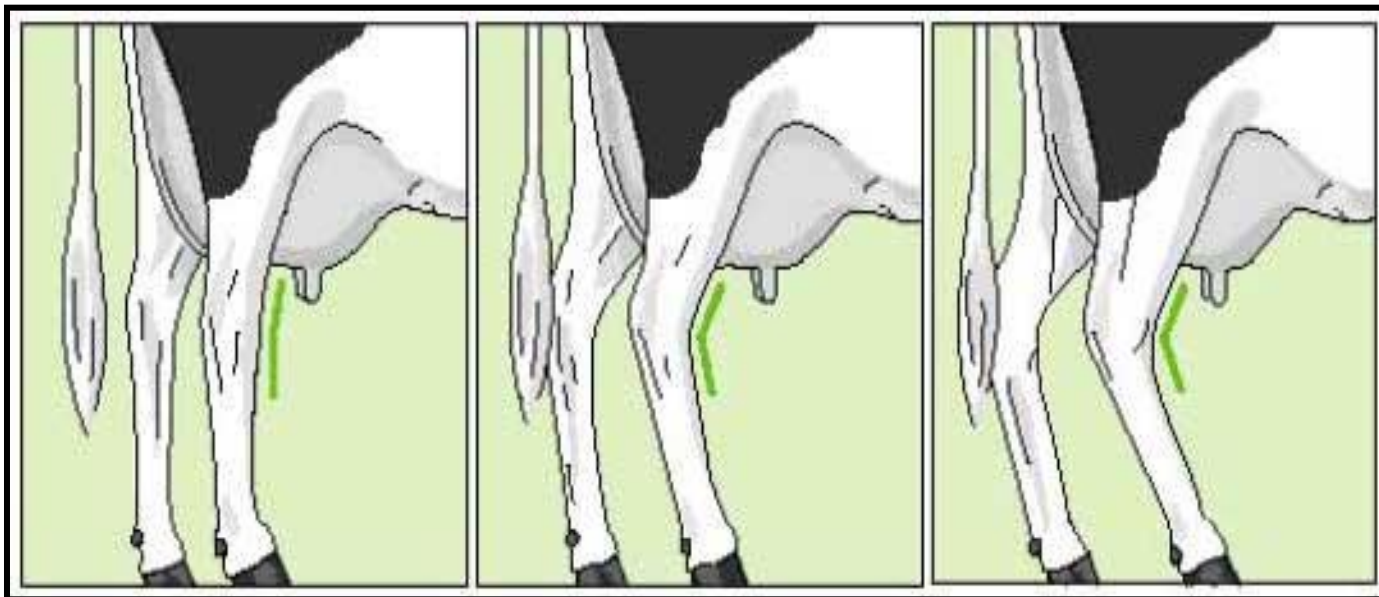


9. FLAT

Feet & Leg Traits

Rear Legs Side View - 20%

Linear score 5 = Ideal



1. STRAIGHT

5. INTERMEDIATE

9. CURVED

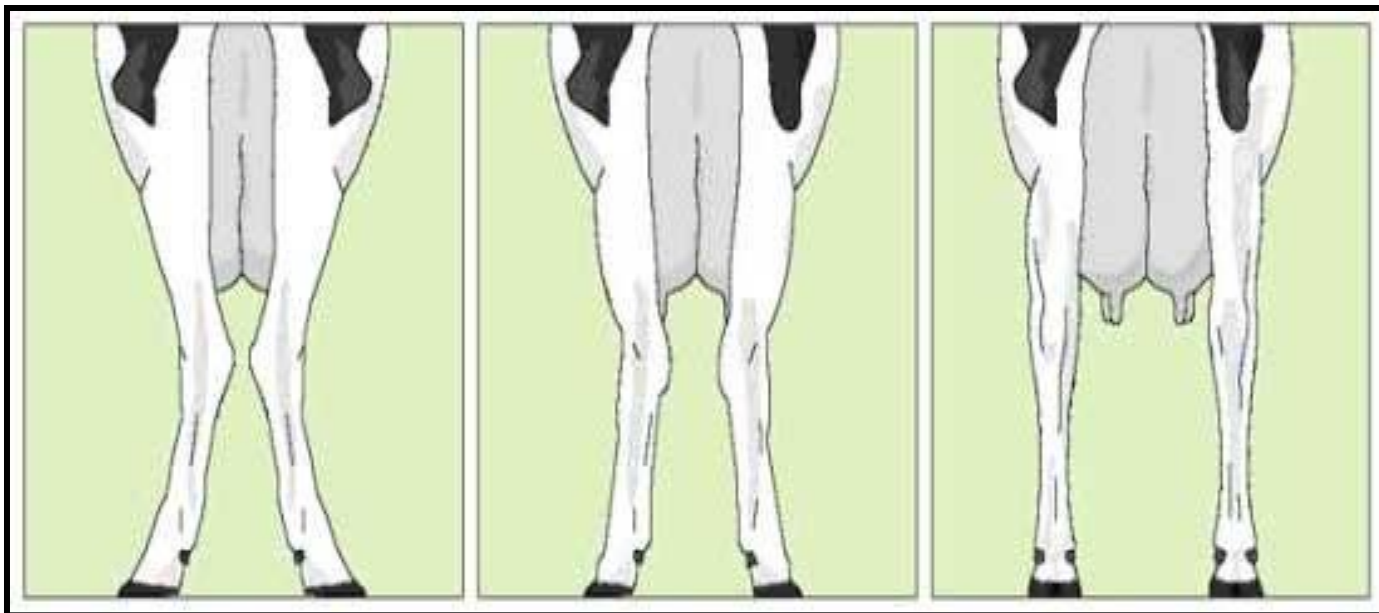


Holstein
AUSTRALIA

Feet & Leg Traits

Rear Legs Rear View - 30%

Linear score 9 = Ideal



1. TOES OUT

5. INTERMEDIATE

9. PARALLEL

Dairy Strength

Contributes 25%

Dairy Strength Traits

Stature - 6%

Linear score 6-8 = Ideal
Measured



Dairy Strength Traits

Muzzle Width - 10%

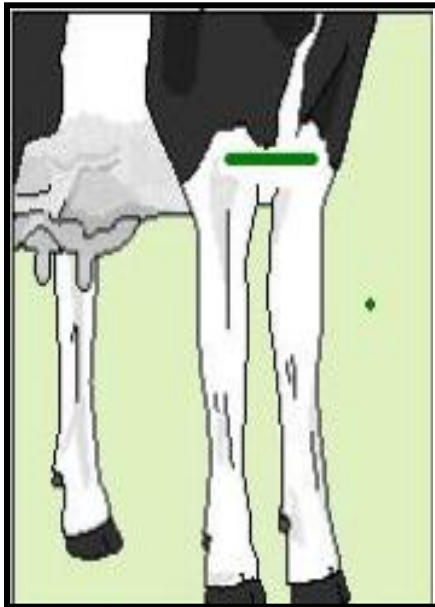
Linear score 9 = Ideal



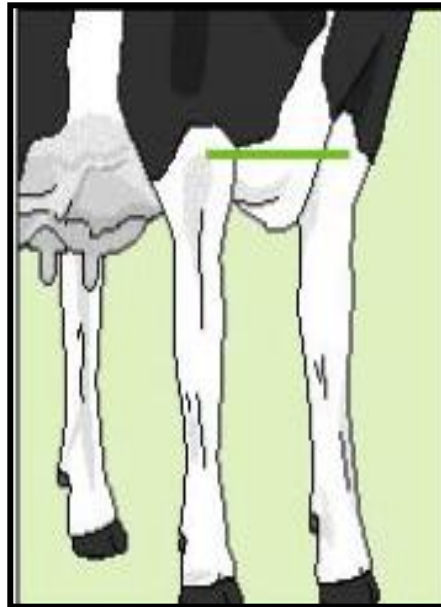
Dairy Strength Traits

Chest Width – 20%

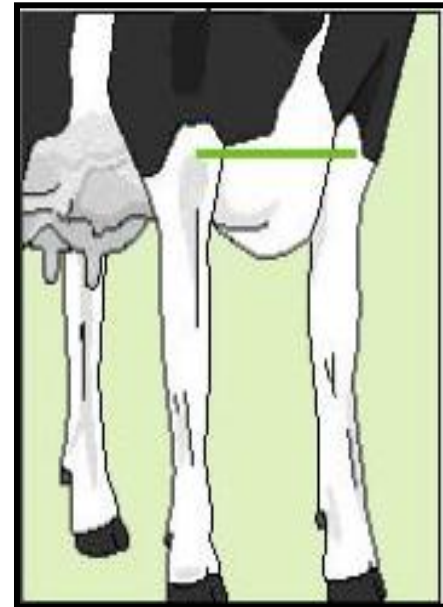
Linear score 7 = Ideal



1. NARROW



5. INTERMEDIATE

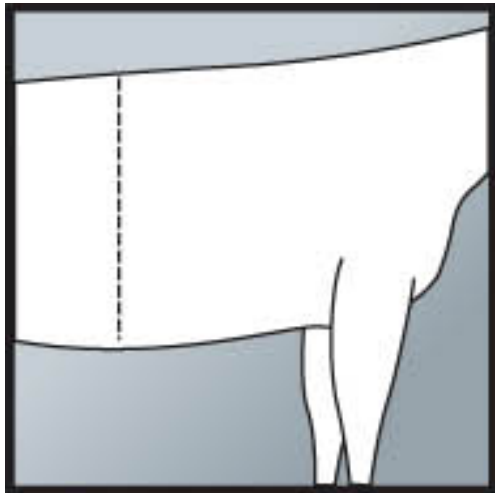


9. WIDE

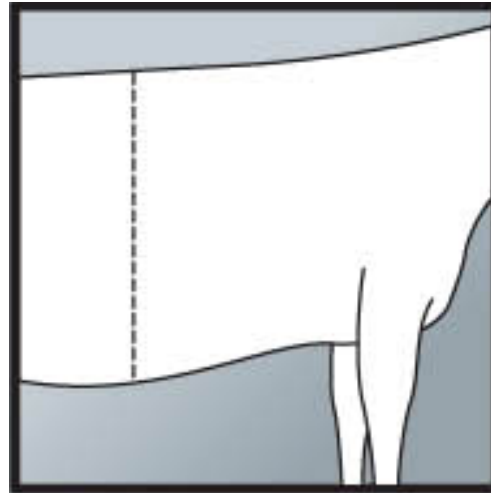
Dairy Strength Traits

Body Depth - 18%

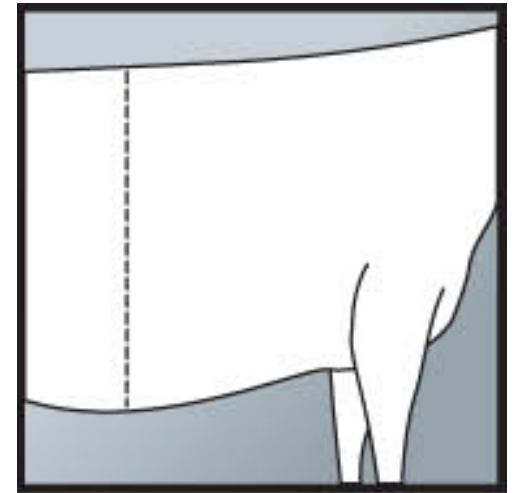
Linear score 7 = Ideal



1. SHALLOW



5. INTERMEDIATE

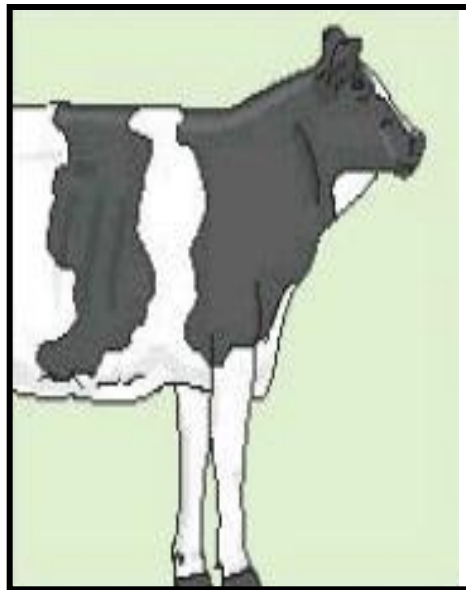


9. DEEP

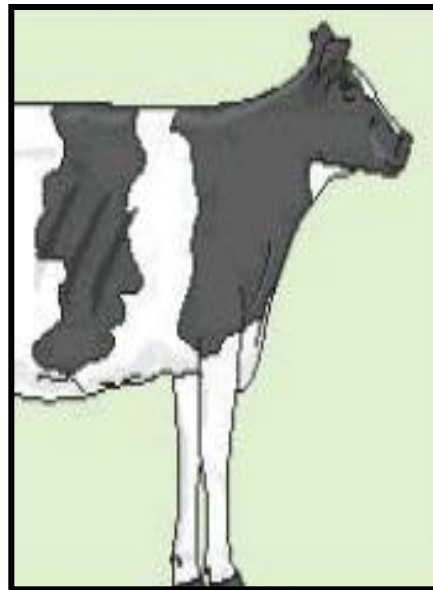
Dairy Strength Traits

Angularity - 25%

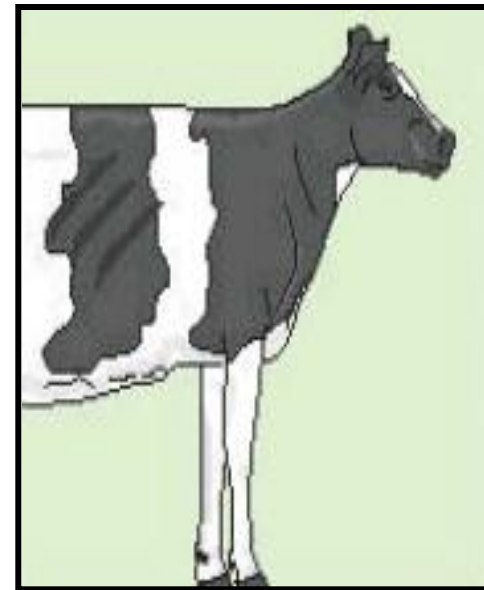
Linear score 9 = Ideal



**1. NON-
ANGULAR**



5. INTERMEDIATE

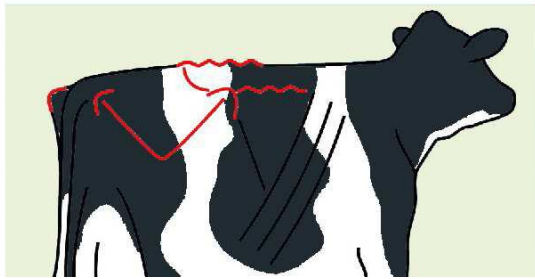


**9. EXTREMELY
ANGULAR**

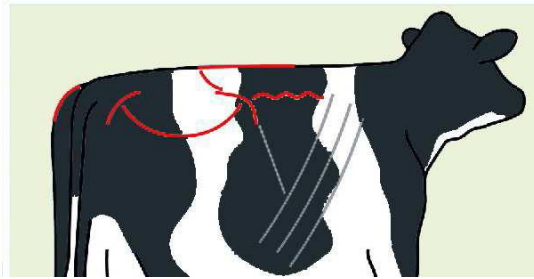
Dairy Strength Traits

Body Condition Score- Research Trait

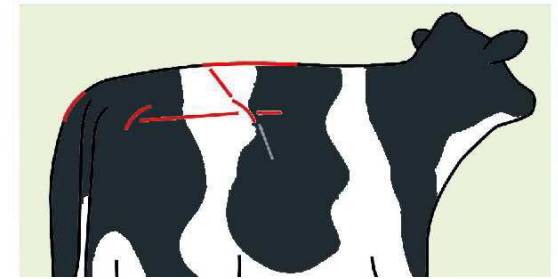
Linear score 7 = Ideal



1. POOR



5. INTERMEDIATE



**9. GROSSLY
FAT**

Scores

Ex	90 – 97 plus Multiple Excellents
VG	85 – 89
GP	80 – 84
G	70 – 79
Fair	60 – 69